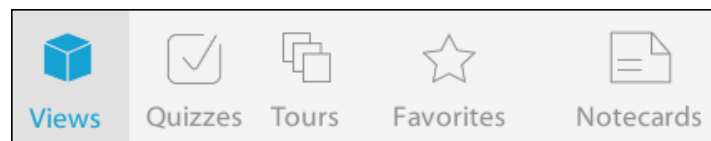


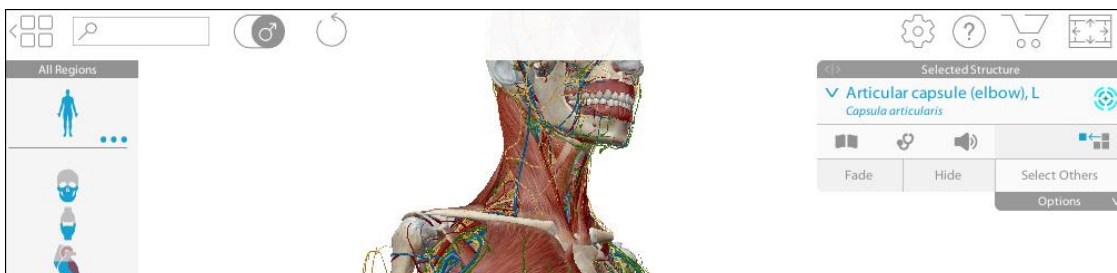
Getting Started


1. Open your web browser and go to <http://ovidsp.ovid.com>.
2. Enter your User ID and Password in the login window; click **Login** (Note: users at institutions using IP authentication will be sent directly to the Ovid search screen, bypassing the Ovid login screen).
3. You may have the **Visible Body** link on your toolbar. If you don't have this, hover over the **Links** tab in the menu above the product selection screen.
4. Select **Visible Body** from the drop-down menu. This takes you to the Visible Body home page, which lists all of the modules included in your subscription.
5. From here, select **Human Anatomy Atlas**.

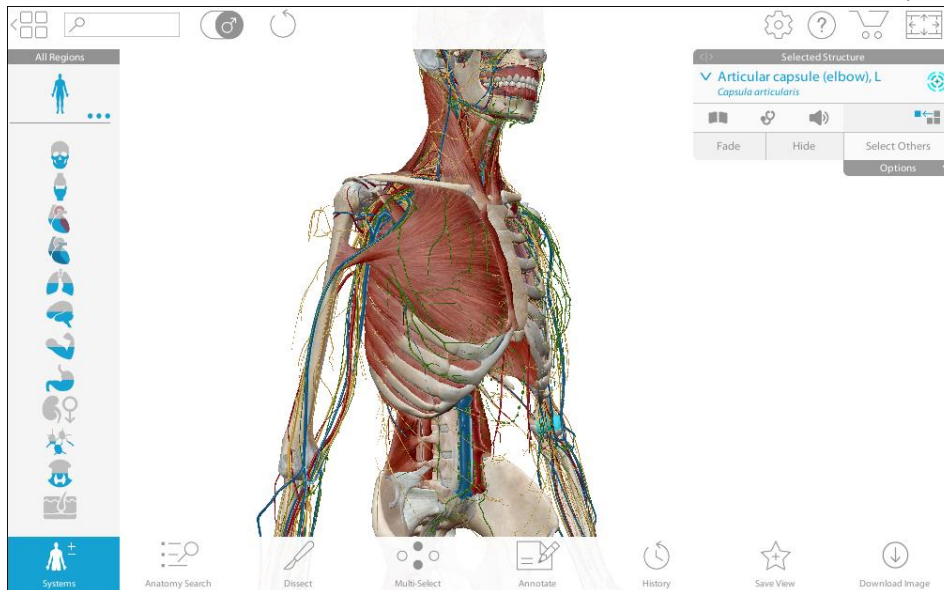




Navigation

- **Views** – view anatomy in 3D, with 4000+ anatomical structures
- **Quizzes** – test yourself on what you've learned
- **Tours** – create a presentation with your favorite views
- **Favorites** – save a custom view and access it again anytime
- **Notecards** – add notes to any anatomy view and mark up the images



You can browse by regional view or body system. Then choose whether you want to see female or male anatomy. To do this, click the  symbol at the top. Then click on a view to explore it.



- You can add or remove systems, e.g. skin, muscles, nerves
- Click on a region, e.g. the eye, to display more information
- To hear a pronunciation of the Latin term, click 
- To read a description, click 
- To rotate the 3D model, click and drag using your mouse

Additional Features

- 3D brain anatomy: refined model of the cerebrum, new motor and sensory maps, and new dermatomes
- 3D Gross Anatomy Lab – dissect a virtual cadaver in prone or supine position
- New structures: Dental models that include cusps, fossae, and surfaces; male and female enhanced skin models; additional hand ligaments; refined female genitalia; and more hip circulation.
- New views: Cross-sections of an incisor, canine, premolar, double root molar, and triple root molar; an interactive, animated disarticulated skull; plus new sagittal and coronal views of the skull.
- 3D labels to tag structures: new Draw and Notepad features for interactive lectures and note-taking!

For more information, click **Help** to view tutorials and support contact details. A mobile app featuring Augmented Reality is also available for newer iOS and Android mobile devices.